

Simulive Sessions

Simulive sessions are pre-recorded sessions configured to play on a schedule, just like live sessions. From the attendees' perspective, the session feels like it is delivered live. Attendees rarely notice that it is a pre-recorded session.

There are several advantages to using simulive instead of live sessions. First, you can review the sessions before the event. Ask your speakers to submit their recorded sessions well in advance of the event date so you have adequate time to review and ask for revisions if required. Second, the video is (hopefully) streamed from a server that is closest to the user and uses queuing to ensure a smooth viewing experience.

When an attendee selects to view a session, the virtual event platform begins feeding the video to the attendee (based on the defined schedule). Ensure your virtual event platform feed simulive videos from a Content Delivery Network (CDN) server, such as an Amazon Web Services (AWS) server. These servers duplicate videos to servers throughout the world to ensure the content is coming from the closest location to the attendee for the best performance. This process is called "edge-serving of content."

Figure 58 depicts the three steps used to display simulive sessions.

1. The attendee selects the session to join.
2. The platform locates the simulive video configured for the session on a CDN server.
3. The closest CDN server delivers the video directly to the attendee.

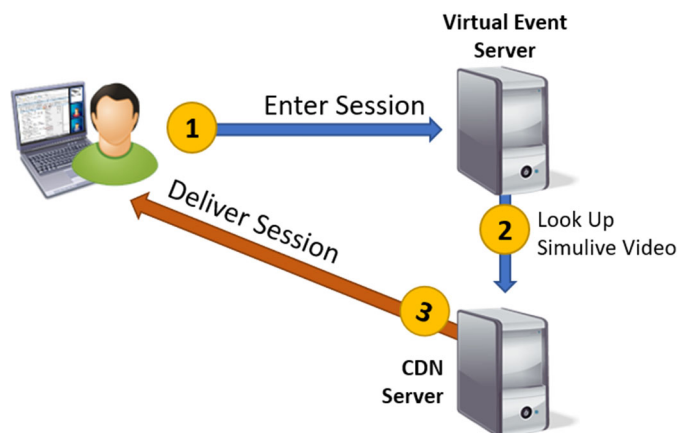


Figure 58. A Content Delivery Network is typically used to feed simulive videos.